



Lines, tubes, and devices

Cardiac leads

What will I gain from this video?

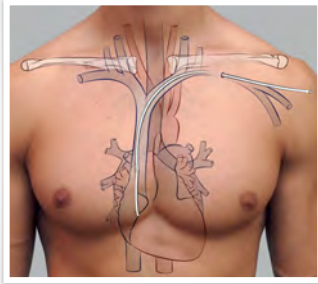
After watching this video, you will know how to determine the correct placement of cardiac leads.

Cardiac pacing devices

- Temporary
- Permanent
 - Ventricular
 - AV sequential
- Implantable cardioverter defibrillator

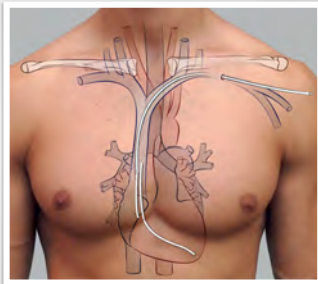
Path of pacer lead insertion

- Subclavian vein
- Brachiocephalic vein
- SVC
- Right atrium

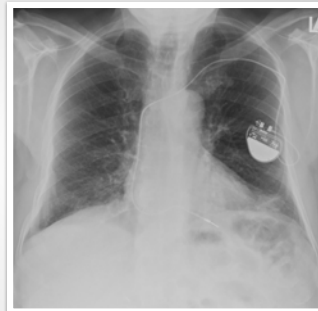


Path of pacer lead insertion

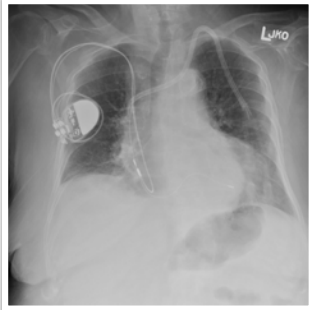
- Subclavian vein
- Brachiocephalic vein
- SVC
- Right atrium
- Right ventricle



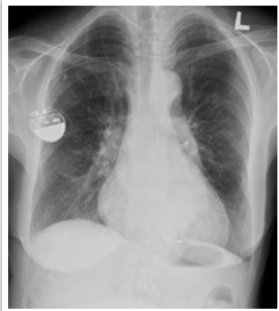
Correct pacer lead position



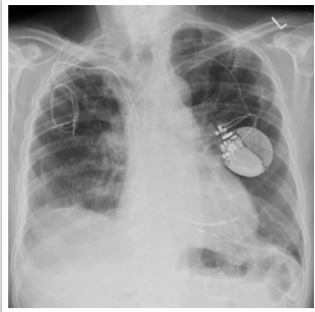
Correct pacemaker lead position



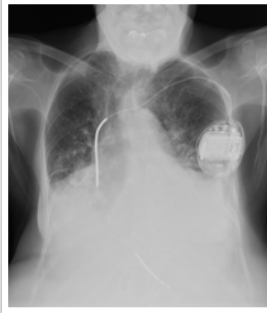
Correct pacemaker lead position

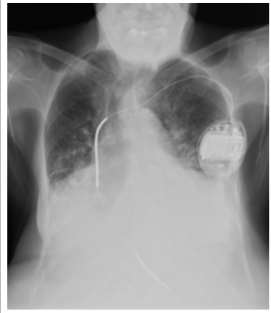


Correct pacemaker lead position

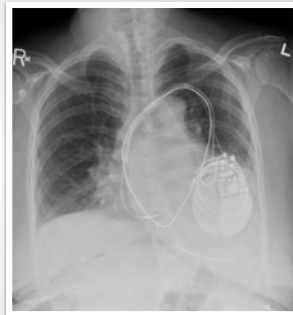


**Correct pacer
lead position**





**Correct pacer
lead position**



Pacer leads are metallic and easy to identify and follow.

Position of pacer leads depends on device.

Leads can be positioned in RA, RV, or coronary sinus.

